

LEGACY

VELVET FOREVER

marilyn



5/64" velours

100% PA IMPREL®

RUG
Twinback

POOLHOOGTE
± 7 mm

TOTALE HOOGTE
± 10 mm

POOLGEWICHT
± 1.155 g/m²

TOTAAL GEWICHT
± 2.100 g/m²

AANTAL NOPPEN/M²
± 305 000

LICHTECHTHEID
≥ 5

WATERECHTHEID
≥ 4-5

WARMTEDOORLAATWEERST.
± 0,15 m² K/W

BRANDKLASSE
Cfl-s1 (EN 13501-1)
indien verkleefd

5/64" velours

100% PA IMPREL®

DOSSIER
Twinback

HAUTEUR DU VELOURS
± 7 mm

HAUTEUR TOTALE
± 10 mm

POIDS DU VELOURS
± 1.155 g/m²

POIDS TOTAL
± 2.100 g/m²

NOMBRE DE POINTS/M²
± 305 000

RÉSISTANCE À LA LUMIÈRE
≥ 5

RÉSISTANCE À L'EAU
≥ 4-5

RÉSISTANCE THERMIQUE
± 0,15 m² K/W

CLASSEMENT FEU
Cfl-s1 (EN 13501-1)
en pose collée

5/64" Velours

100% PA IMPREL®

RÜCKEN
Twinback

POLHÖHE
± 7 mm

GESAMTHÖHE
± 10 mm

POLGEWICHT
± 1.155 g/m²

GESAMTGEWICHT
± 2.100 g/m²

NOPPEN/M²
± 305 000

LICHTECHTHEIT
≥ 5

WASSERECHTHEIT
≥ 4-5

WÄRMEDURCHLASSWIDERST.
± 0,15 m² K/W

BRANDKLASSE
Cfl-s1 (EN 13501-1)
verklebt

5/64" cut pile

100% PA IMPREL®

BACKING
Twinback

PILE HEIGHT
± 7 mm

TOTAL HEIGHT
± 10 mm

PILE WEIGHT
± 1.155 g/m²

TOTAL WEIGHT
± 2.100 g/m²

TUFT DENSITY/M²
± 305 000

LIGHT FASTNESS
≥ 5

WATER RESISTANCE
≥ 4-5

THERMAL RESISTANCE
± 0,15 m² K/W

FIRE CLASS
Cfl-s1 (EN 13501-1)
if glued

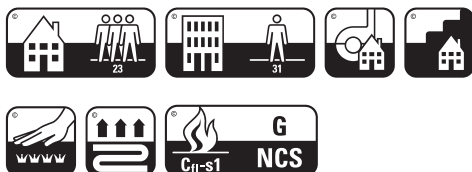
EN14041

20

Balta Industries - Kanegem-
straat 15 - BE 8700 Tielt
DOP: 1011#IE00CV

Textile Floor Covering EN 1307
Notified body 2401

www.baltamediabank.com



REG. NR
D38D1BF7



EAC



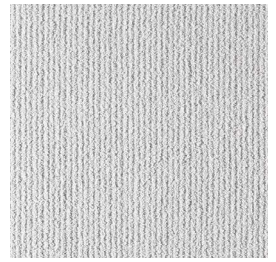
Onder voorbehoud van wijzigingen van de technische specificaties - Sous réserve de modifications techniques - Unter Vorbehalt von technischen Änderungen - All rights reserved to alter technical specification

29	31	33	38	42	49	52	56	63	79	90	95	97
ca 4m

LEGACY

VELVET FOREVER

marilyn



90 4m



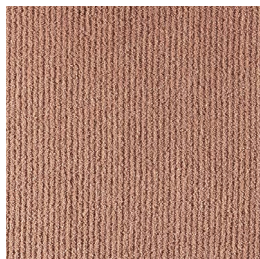
95 4m



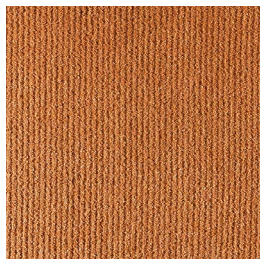
97 4m



79 4m



63 4m



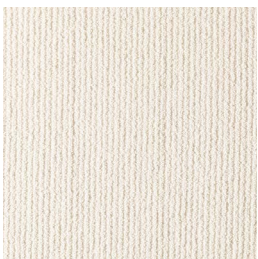
56 4m



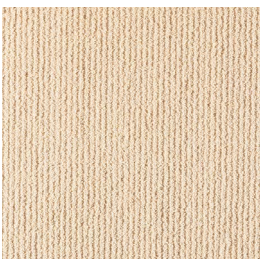
52 4m



29 4m



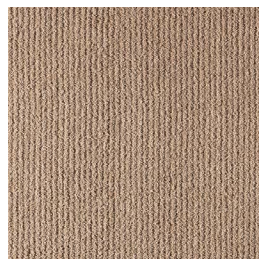
31 4m



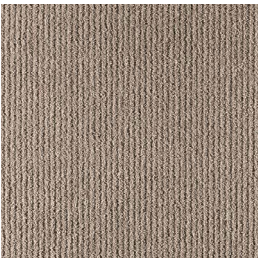
33 4m



38 4m



42 4m



49 4m